



Current Transformer

Model 19

APPLICATION:

Metering

FREQUENCY:

50-400 Hz.

INSULATION LEVEL:

600 Volts. 10 kV BIL. full wave

WINDOW DIAMETER:

4.25"

APPROXIMATE WEIGHT:

3 lbs.

CONNECTIONS:

- Flexible Leads are UL 1015 105°C, CSA approved #15AWG, 24" long
- Non-standard length to be specified
- SHT Terminals are brass studs No. 8-32 UNC with one flat washer, lockwasher, and regular nut



19SHT



19RL

CERTIFICATIONS:



| Model | 19SHT | 19RL |
|-------------|-------|------|
| Window Size | 4.25 | 4.25 |
| Width | 6.00 | 5.92 |
| Height | 6.17 | 5.92 |
| Depth | 1.15 | 1.13 |

MODEL 19SHT and 19RL
Window Diameter 4.25"
Approximate weight: 3 lbs.

| CATALOG NUMBER | CURRENT RATIO | V.A. FOR ± 1% CLASS | ANSI METERING CLASS AT 60 HZ | | | | | SECONDARY WINDING RESISTANCE (OHMS @ 75° C) | CONTINUOUS THERMAL RATING FACTOR | |
|----------------|---------------|---------------------|------------------------------|------|------|------|------|---|----------------------------------|--------|
| | | | B0.1 | B0.2 | B0.5 | B0.9 | B1.8 | | @ 30°C | @ 55°C |
| 19**-301 | 300:5 | 4 | 0.6 | 1.2 | 2.4 | - | - | 0.048 | 2 | 2 |
| 19**-401 | 400:5 | 10 | 0.3 | 0.6 | 1.2 | - | - | 0.064 | 2 | 2 |
| 19**-501 | 500:5 | 15 | 0.3 | 0.6 | 1.2 | - | - | 0.087 | 2 | 1.5 |
| 19**-601 | 600:5 | 15 | 0.3 | 0.3 | 0.6 | 1.2 | - | 0.116 | 2 | 1.5 |
| 19**-751 | 700:5 | 25 | 0.3 | 0.3 | 0.6 | 0.6 | - | 0.145 | 1.5 | 1.33 |
| 19**-801 | 800:5 | 30 | 0.3 | 0.3 | 0.6 | 0.6 | - | 0.155 | 1.5 | 1.33 |
| 19**-102 | 1000:5 | 30 | 0.3 | 0.3 | 0.6 | 0.6 | - | 0.242 | 1.33 | 1 |
| 19**-122 | 1200:5 | 40 | 0.3 | 0.3 | 0.3 | 0.6 | - | 0.291 | 1.33 | 1 |
| 19**-152 | 1500:5 | 15 | 0.3 | 0.3 | 0.6 | 1.2 | - | 0.200 | 1.5 | 1 |
| 19**-162 | 1600:5 | 15 | 0.3 | 0.3 | 0.3 | 0.6 | - | 0.213 | 1.5 | 1 |
| 19**-202 | 2000:5 | 20 | 0.3 | 0.3 | 0.3 | 0.6 | - | 0.266 | 1.33 | 1 |
| 19**-252 | 2500:5 | 20 | 0.3 | 0.3 | 0.3 | 0.3 | - | 0.333 | 1 | 0.8 |
| 19**-302 | 3000:5 | 25 | 0.3 | 0.3 | 0.3 | 0.3 | - | 0.399 | 1 | 0.8 |

Note: When ordering, prefix catalog number with model designation required., i.e. 19RL-301, or 19SHT-301 etc.



19SHT

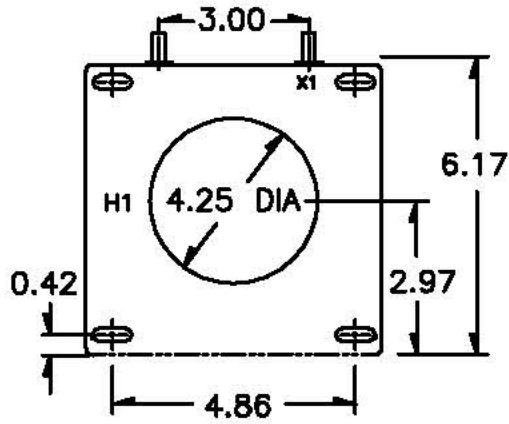


19RL

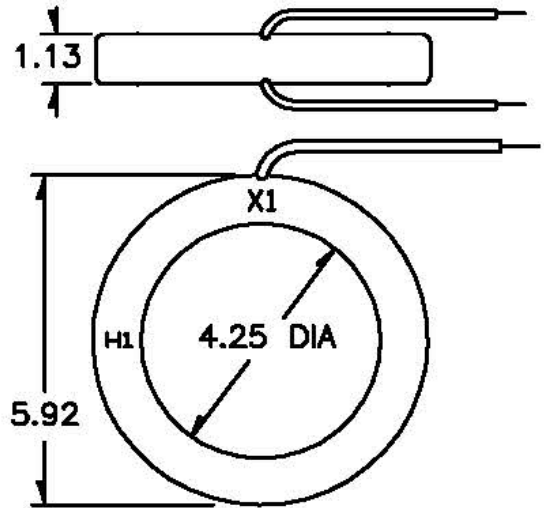
Products are manufactured in a plant whose quality management system is certified / registered as being in conformity with ISO 9001



19 SHT



19RI



EXCITATION CURVE

